
Imperial Irrigation District and Comisión Federal De Electricidad

Vicken Kasarjian, Energy Manager
Imperial Irrigation District



IID Provides Energy and Water

IID has two core business functions and one overarching mission - to keep the lights on and the water flowing. These two basic functions require extensive planning, teamwork and, above all, consistency.



Governance

- As a public agency, IID's customers own the district
- The registered voters who reside in the district's water service area elect IID's five-member board of directors



Matt Dessert
Division 1
Term Expires 2018



Bruce Kuhn
Division 2
Term Expires 2016



James C. Hanks
Division 3
Term Expires 2018



Steve Benson
Division 4
Term Expires 2016



Norma Sierra Galindo
Division 5
Term Expires 2018

CFE Service - Electricity

- The Comisión Federal de Electricidad is the state-owned electric utility of Mexico, widely known as CFE. It is the country's dominant electricity supplier and electric company.
- CFE's mission is to provide the service of electric power while committed to customer satisfaction with the country's development and the preservation of the environment.

Comision Federal de Electricidad

- Similar to IID, CFE is a form of public agency, a division of the federal government with oversight provided by a 10-member board of directors.
- CFE's board is also responsible for defining the policies, guidelines and strategic vision of the Federal Electricity Commission, its subsidiaries and affiliates productive enterprises.
- The geographic proximity and commonality of interests have led the agencies to open discussions intended to lead to partnership opportunities.



Comisión Federal de Electricidad Baja California Divisions



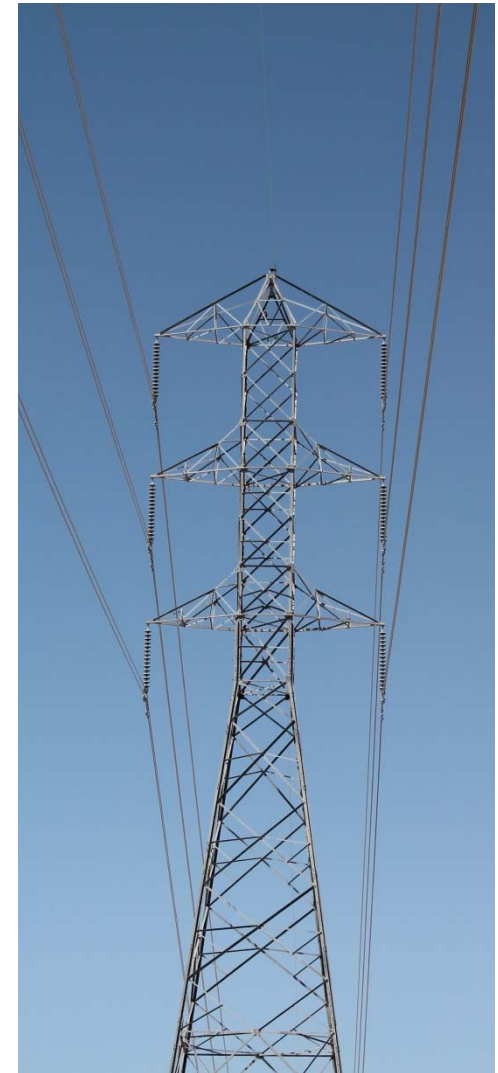
Zones	Locations
San Luis	Puerto Penasco, San Luis Rio Colorado, Valle de Mexicali
Mexicali	Mexicali
Tijuana	Tecate, Tijuana and Playas de Rosarito
Ensenada	Ensenada
Constitucion	Comondu, Loreto and Mulege
La Paz	La Paz
Los Cabos	Los Cabos

CFE Baja California Structure



IID Energy Statistics

- Transmission lines: 1,421.1 miles
- Poles in service: 102,946 (all)
- Substations: 114 (trans./dstrbtn.)
- Peak load: 982 MW – 7/30/2014
- Service Territory:
 - *Imperial County* 4,225 square miles
 - *Riverside County* 1,954 square miles
 - *San Diego County* 293 square miles
 - *Total.....6,472 square miles*



Potential Partnership Pursuits

- Direct interconnection of the IID and CFE systems allows for:
 - *Reserve sharing*
 - *Access to new energy partners (Salt River Project, Western Area Power Administration, and Palo Verde,)*
 - *Independent generation developers selling directly to CFE load customers*
 - *Emergency assistance*
- Joint study process initiated to determine optimal location and configuration.



Cross-Border Training Opportunities

IID and CFE are in discussions to implement cross-border training opportunities in an effort to enrich staff from:

- System Operations
- Transmission Planning
- Transmission Engineering
- Distribution Planning
- Distribution Engineering
- Construction & Maintenance
- Administration



CFE Services to IID

- CFE has robust operation and maintenance program for its high voltage system to ensure grid reliability.
- IID has requested a proposal from CFE to provide high voltage transmission line and insulator washing services.
- Included in the scope of services will be training for IID staff.

Cross-Border Partnership

- IID looks forward to a productive and mutually beneficial relationship with CFE.